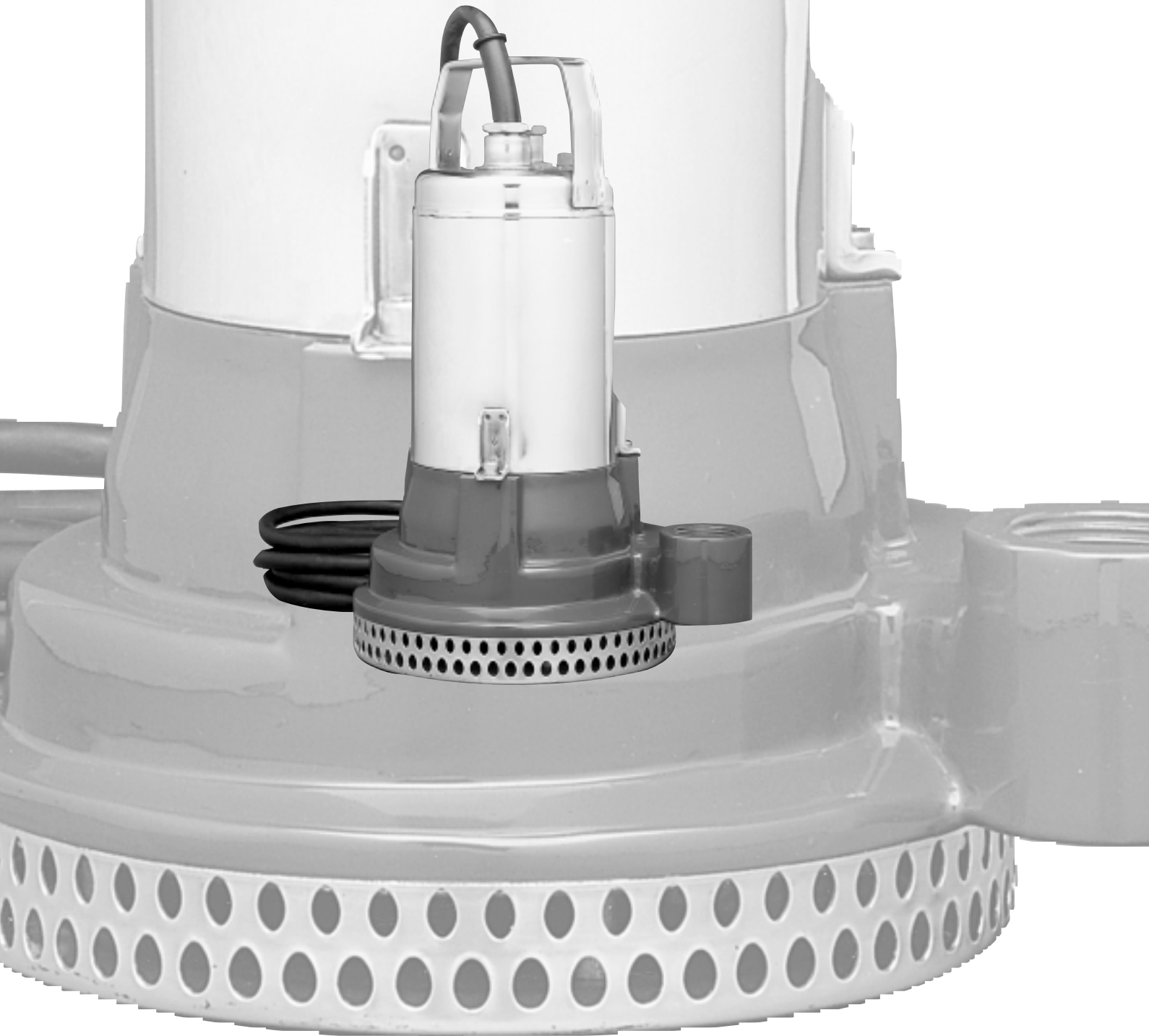




# Product catalogue

---

Submersible drainage pump STA, 50 Hz



Flygt

---



**ITT Industries**  
*Engineered for life*



## Introduction

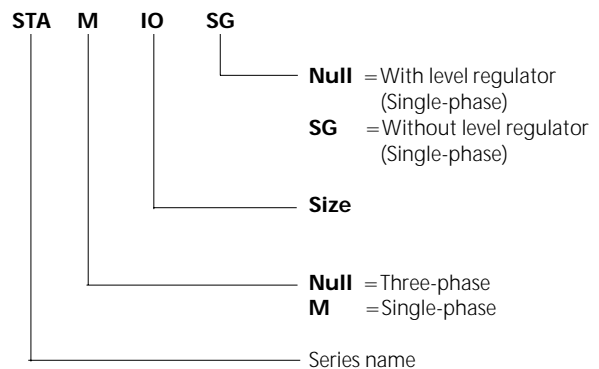
The STA range is a compact high performance range of submersible pumps with pump body in cast iron and motor casing in stainless steel. The impeller is rubber coated to be long lasting.

Delivery: up to 275 l/min  
 Head: up to 20.5 m

## Applications

- Drainage of flooded excavations and marshy land
- Irrigation from rainwater reservoirs, ditches and ponds
- Water pumping from pools, lakes and watercourses

## Product identity





# STA

## Product

Submersible pump suitable for drainage and irrigation applications.

## Process data

Liquid temperature: max 50° C  
 Fully submerged max 25° C  
 Partly submerged

## Motor data

Oil filled motor for submersible duty. Capacitor built in control box on cable

Frequency 50 Hz  
 Insulation class F (155° C)  
 Protection class IP68  
 Immersion depth max 5 m  
 Oil Dielectric non-toxic

## Monitoring equipment

Single-phase Automatic reset overload protection  
 Three-phase To be provided at installation

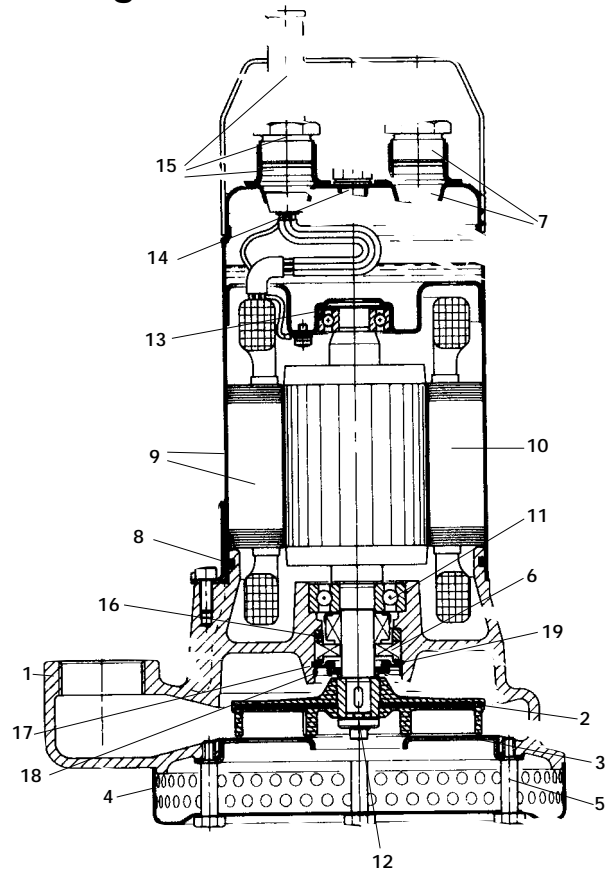
## Cable

H07RN-F 5 m

## Control

Single-phase Built in level regulator  
 Three-phase To be provided

## Design



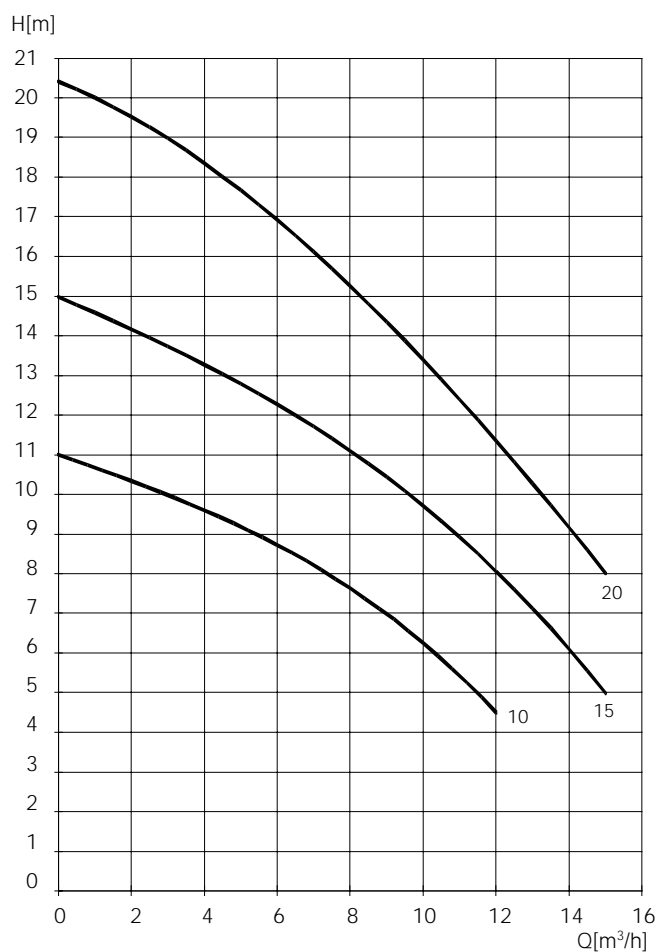
- 1. Pump body, cast iron
- 2. Impeller, rubber coated
- 3. Wear flange
- 4. Suction filter, stainless steel
- 5. Flange filter fixing screw
- 6. Mechanical seal, carbon/ceramic
- 7. Insert & union plug
- 8. O-ring
- 9. Motor housing (stainless steel) with stator
- 10. Shaft & rotor
- 11. Lower bearing
- 12. Impeller lock washer
- 13. Upper bearing
- 14. Plug & washer
- 15. Supply cable gland
- 16. Spacer for mechanical seal
- 17. Shoulder seal washer
- 18. Labyrinth seal cover
- 19. Sand slinger

## Motor rating

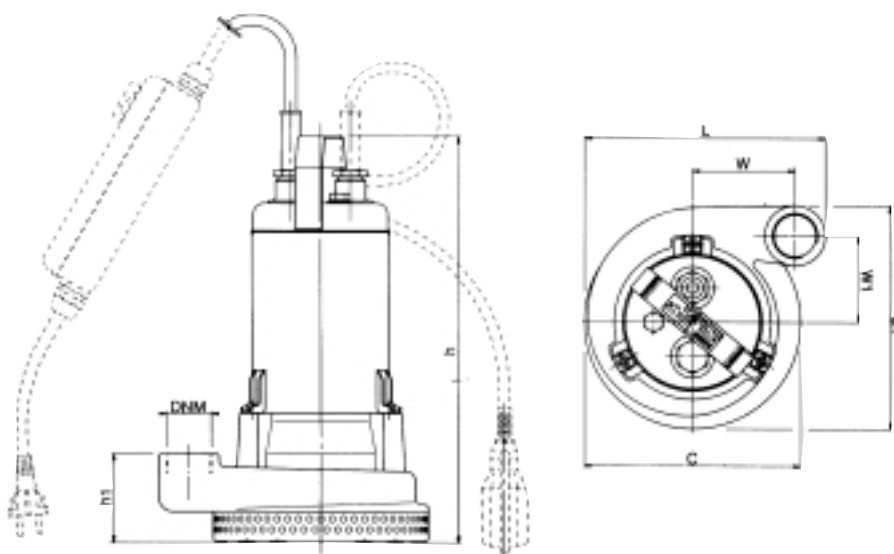
Pump type	Power kW	Input current A	
		220-240 V	380-415 V
STA 10	0.6	2.8	1.6
STA 15	0.6	3.1	1.8
STA 20	0.75	3.6	2.1

Pump type	Power kW	Capacitor μF	V	Input current A
STAM 10	0.6	20	450	4.0
STAM 15	0.6	20	450	4.7
STAM 20	0.75	25	450	5.8

## Performance curves



## Dimensions and weight



Pump type	Dimensions in mm							DNM	Weight kg
	C	H	H1	L	L1	W	W1		
STA(M) 10	Ø200	380	81	209	223	81	95	RP 1" 1/4	18.5
STA(M) 15	Ø200	380	81	209	223	81	95	RP 1" 1/4	18.5
STA(M) 20	Ø200	380	81	209	223	81	95	RP 1" 1/4	19.5